



## TUESDAY RACING SERIES

May 7, 2019 – September 17, 2019

### SEASON OPENER

May 4, 2019

### MEMORIAL CUP

July 20, 2019

### ASTORIA REGATTA

August 10 & 11, 2019

### CLOSING DAY RACE

September, 22, 2019

Astoria Yacht Club  
Astoria, Oregon, USA

## SAILING INSTRUCTIONS

*The notation '[DP]' in a rule in the Sailing Instructions means that the penalty for a breach of that rule may, at the discretion of the protest committee, be less than disqualification.*

### 1 RULES

- 1.1 Regattas will be governed by the rules as defined in *The Racing Rules of Sailing*.
- 1.2 The following prescriptions of *US Sailing* will not apply: Rule 63.2 and Rule 63.4.
- 1.3 Race signal "AP" will be changed as follows: Replace the second sentence with, "The warning signal will be made no less than 2 minutes after removal."
- 1.4 Racing rule 40 will be changed as follows: Replace the entire Rule with, "Competitors shall wear personal flotation devices, except briefly while changing or adjusting clothing or personal equipment. This rule applies at all times while afloat. Wet suits and dry suits are not personal flotation devices. Flag Y need not be displayed." [DP]
- 1.5 Each boat shall provide the race committee with emergency contact information for each person aboard. A completed Race Crew Manifest Form (Attachment B) shall be provided to the race committee each day prior to the signal boat leaving its moorage. [DP]
- 1.6 Boats shall have and monitor a working VHF marine radio capable of transmitting and receiving on channels 13, 16, and 68 at all times while afloat. [DP]
- 1.7 Boats shall check in by VHF marine radio and provide the number of persons aboard prior to the first warning signal of the day when the race committee is in the racing area. [DP]

### 2 NOTICES TO COMPETITORS

- 2.1 Notices to competitors will be posted on the official notice board located online at <http://www.astoriayachtclub.com/>.



### 3 CHANGES TO SAILING INSTRUCTIONS

- 3.1 Any change to the sailing instructions or a race cancellation will be posted no later than one hour before the scheduled warning signal on the day it will take effect.
- 3.2 Oral changes to the sailing instructions may be given on the water by VHF marine radio. The failure to make announcements, the failure to hear the communications, or any other issue regarding the communication shall not be grounds for redress by a boat. This changes RRS 60.1(b).

### 4 SCHEDULE OF RACES

- 4.1 The dates of racing, and the scheduled time of the warning signal for the first race each day are in Attachment C.
- 4.2 There will be one or more races per day for each class.

### 5 CLASS FLAGS

- 5.1 Class flags will be international code flag numeral pennants.

### 6 RACING AREAS

- 6.1 Attachments D & E show the location of the racing areas on the Columbia River in the vicinity of Astoria, Oregon.

### 7 THE COURSES

- 7.1 Attachments D & E list the courses including the order in which marks are to be passed and the approximate course lengths.
- 7.2 No later than the warning signal, the race committee signal vessel will display a number corresponding to the course.
- 7.3 With the course number, the race committee signal vessel will designate on which side each mark is to be left by displaying a "P" for port or "S" for starboard. If no side is designated, all marks shall be left to port.

### 8 MARKS

- 8.1 Marks are described in Attachments D & E.
- 8.2 The starting and finishing marks will be Buoy 33 for races started west of the Astoria-Megler Bridge and Buoy 37 for races started east of the Astoria-Megler Bridge or as otherwise designated by the race committee.

### 9 THE START

- 9.1 Races will be started
  - 9.1.1 Using RRS 26 with the warning signal made 5 minutes before the starting signal, or
  - 9.1.2 Using a "rabbit boat" as described in 9.3 & Attachment F, or
  - 9.1.3 Using a "pursuit start" as described in 9.4.
- 9.2 The starting line will be between a staff displaying an orange flag on the starting mark and the course side of the opposite starting mark.
- 9.3 Unless a race has been postponed or abandoned by the race committee, when there is no race committee signal vessel on station at the starting line at least two minutes prior to the scheduled warning signal, the race will be started with a "rabbit boat".
  - 9.3.1 The "rabbit boat" will be the competing boat with the fastest handicap rating, unless the boats present agree otherwise.
  - 9.3.2 The "rabbit boat" will record the start time and submit it to the race committee at [aycracecommittee97103@gmail.com](mailto:aycracecommittee97103@gmail.com) at the first reasonable opportunity. [DP]
  - 9.3.3 When a boat fails to *start* correctly she shall sail across an extension to the pre-start side of the designated starting mark before *starting*.
- 9.4 Pursuit races will be started using RRS 26 with the warning signal made 5 minutes before the starting signal for the boat(s) with the slowest handicap rating.

- 9.4.1 The race committee will assign the starting times for each successive boat based upon her handicap rating. This time shall be her starting signal.
- 9.4.2 Boats racing as a one design or level rating fleet will start together.
- 9.4.3 All boats shall be considered *racing* at the preparatory signal for the first boat to start.
- 9.4.4 Racing rule 29.1 will be changed as follows: Replace the entire Rule with, "When at a boat's designated starting time any part of her hull, crew or equipment is on the course side of the starting line she shall sail across an extension to the pre-start side before *starting*. The race committee will not display flag X or make a sound."
- 9.4.5 The starting line will be between a staff displaying an orange flag on the starting mark and the course side of the opposite starting mark.
- 9.5 A boat that does not *start* within ten (10) minutes of her starting signal will be scored DNS without a hearing. This changes rules 63.1 & A5.
- 9.6 The race committee may hail the names and/or sail numbers of OCS boats. The failure to make hails, the failure to hear the hail, or any other issue regarding the hail shall not be grounds for redress by a boat. This changes RRS 60.1(b).

## 10 CHANGE OF THE NEXT LEG OF THE COURSE

- 10.1 Racing rule 33 will be changed as follows: Replace the entire Rule with, "The race committee may change a leg of the course that begins at a rounding *mark* by changing the position of the next *mark* (or the finishing line) and signaling all boats by VHF marine radio of the change before they begin the leg. The next *mark* need not be in position at that time. Subsequent legs may be changed without further signaling to maintain the course shape."

## 11 THE FINISH

- 11.1 The finishing line will be between a staff displaying an orange flag on the finishing mark and the course side of the opposite finishing mark.
- 11.2 If the race committee is absent when a boat finishes, she should report her finishing time, and her position in relation to nearby boats, to the race committee at the first reasonable opportunity. [DP]

## 12 PENALTY SYSTEM

- 12.1 The following prescription of *US Sailing* will apply: Appendix V1 & V2.

## 13 TIME LIMITS

- 13.1 For the Tuesday Racing Series, a boat that *starts*, but does not *finish* before civil sunset shall be scored DNF without a hearing. This changes rules 35, 63.1 & A5.
- 13.2 A boat that *starts*, but does not *finish* within 30 minutes of the first boat to sail the course as required by rule 28 and *finish* shall be scored DNF without a hearing. This changes rules 35, 63.1 & A5.

## 14 PROTESTS AND REQUESTS FOR REDRESS

- 14.1 Protest forms may be obtained from the race committee. Protests and requests for redress or reopening shall be delivered to the race committee in person or to [aycracecommittee97103@gmail.com](mailto:aycracecommittee97103@gmail.com) within the appropriate time limit.
- 14.2 The protest time limit is 90 minutes after the last boat to *finish* the last race of the day or the last race has been abandoned, or 60 minutes after the race committee signal vessel has docked, whichever is later.
- 14.3 Notices of protests by the race committee, technical committee or protest committee will be posted to inform boats under RRS 61.1(b).

## 15 SCORING

- 15.1 One (1) race is required to be completed to constitute a series. To be included in the final series standings for the Tuesday Racing Series, a boat must be registered for the entire series and must

complete one more than one half of all Tuesday Racing Series races held during the series. A boat's series score will be the total of her race scores excluding enough of her worst scores to just satisfy the completion requirement of the previous sentence for the final series standing.

**15.2** With respect to any series other than the Tuesday Racing Series, scores will be computed as follows:

**15.2.1** When fewer than 5 races have been completed, a boat's series score will be the total of her race scores (no excluded scores).

**15.2.2** When from 5 to 9 races have been completed, a boat's series score will be the total of her race scores excluding her worst score (one excluded score).

**15.2.3** When 10 or more races have been completed, a boat's series score will be the total of her race scores excluding her two worst scores (two excluded scores).

**15.3** Tuesday series races conducted as pursuit races will be part of the Tuesday Racing Series, and will also be scored separately as their own series.

**15.4** A boat that is raced short or single handed, or without flying sails, may have its PHRF rating adjusted for an individual race or the entire Tuesday Racing Series, or for an entire weekend regatta. The boat shall notify the race committee in writing of a request for rating adjustment at the competitor meeting prior to the affected race or races. For a Tuesday series race for which there is no scheduled competitor meeting, the skipper shall notify the race signal boat crew in writing prior to the race signal boat leaving the dock, or if there will be no race signal boat for that race, the race committee must be notified by email no later than one hour prior to the scheduled starting time at [aycracecommittee97103@gmail.com](mailto:aycracecommittee97103@gmail.com). [DP] The adjustment for all boats will be as follows:

Short-handed crew - PHRF rating plus 6 seconds

(For boats less than 32' LOA, two crew members; for boats 32' LOA or greater, three crew members)

Single handed crew - PHRF rating plus 12 seconds

No flying sails - PHRF rating plus 18 seconds

## **16 SAFETY REGULATIONS**

**16.1** Boats shall not impede the passage of a stand-on vessel and shall comply with the [U.S. Inland Navigation Rules Act of 1980](#). Boats that fail to comply promptly with signals from a race official to alter course, or that receive a 5-blast warning (5 short sounds) from a stand-on vessel, will be subject to protest and possible disqualification. [DP]

**16.2** A boat that retires from a race or leaves the racing area between races shall notify the race committee in person, by phone or by VHF marine radio at the first reasonable opportunity. [DP]

## **17 RADIO COMMUNICATION**

**17.1** Except in an emergency, a boat that is racing shall not make voice or data transmissions and shall not receive voice or data communication that is not available to all boats. [DP]

**17.2** Unless otherwise specified prior to racing, or advised by the race committee, VHF Marine radio channel 68 will be used for communication.

**17.3** Competitors shall monitor Channel 16 and Channel 13 at all times while afloat. [DP]

## **18 PRIZES**

**18.1** Prizes may be given as determined by the Astoria Yacht Club.

## **19 DISCLAIMER OF LIABILITY**

**19.1** Competitors participate at their own risk. See Racing Rule 4 Decision to Race. The organizing authority will not accept any liability for material damage or personal injury or death sustained in conjunction with or prior to, during, or after racing. Competitors accept full responsibility for their actions during any activity related to organizing authority, including on-shore activities before, during, and after racing.

**19.2** Competitors are expected to abide by Port of Astoria rules with respect to Port facilities. [DP]

## **20 INSURANCE**

- 20.1** Each participating boat shall be insured with valid third-party liability insurance with a minimum cover of \$300,000 per incident or the equivalent.
- 20.2** Boat shall be prepared to supply proof of insurance upon request.

## **21 RIGHT TO USE NAME AND LIKENESS**

- 21.1** By participating in any Astoria Yacht Club racing event, all competitors automatically grant Astoria Yacht Club the right to make, use and show, at any time and at its discretion, any photographs, or recordings produced during the event without compensation. Astoria Yacht Club reserves the right to require some or all competitors to carry tracking or media recording or transmitting devices while racing. [DP]

# ATTACHMENT B



## Race Crew Manifest

Boat: \_\_\_\_\_ Skipper: \_\_\_\_\_ Date: \_\_\_\_\_

| Crew Member | Crew Cell Phone | Emergency Contact | Emergency Phone |
|-------------|-----------------|-------------------|-----------------|
|             |                 |                   |                 |
|             |                 |                   |                 |
|             |                 |                   |                 |
|             |                 |                   |                 |
|             |                 |                   |                 |
|             |                 |                   |                 |
|             |                 |                   |                 |
|             |                 |                   |                 |
|             |                 |                   |                 |



# ATTACHMENT C



## 2019 SCHEDULE OF RACES

| Event                 | Registration   | Dates of Racing   | Time of Warning Signal |
|-----------------------|----------------|---|------------------------|
| Tuesday Racing Series | 1730, May 7    | May 7, 14, 21 & 28<br>June 4, 11, 18 & 25<br>July 2, 9, 16, 23 & 30<br>Aug 6, 13, 20 & 27<br>Sep 3, 10 & 17 | 1830                   |
| Pursuit Races         | 1730, July 2   | 7/2, 7/9, 8/6 & 8/13  | 1830                   |
| Season Opener         | 1000, May 4    | May 4   | 1200                   |
| Memorial Cup          | 1000, July 20  | July 20   | 1200                   |
| Astoria Regatta       | 1000, Aug. 10  | August 10 & 11  | 1200                   |
| Closing Day Race      | 1000, Sept. 22 | September 22  | 1200                   |

NOTE 1: Pre-season competitor meetings for all skippers, crews, and anyone interested in the club's racing activities are scheduled for March and April at the Astoria Yacht Club. The first meeting will be held Tuesday, March 19 to discuss the club's upcoming racing season and race documents. The second meeting will be held Tuesday, April 16 to review maritime and racing rules. Each meeting will begin at 1830 hours.

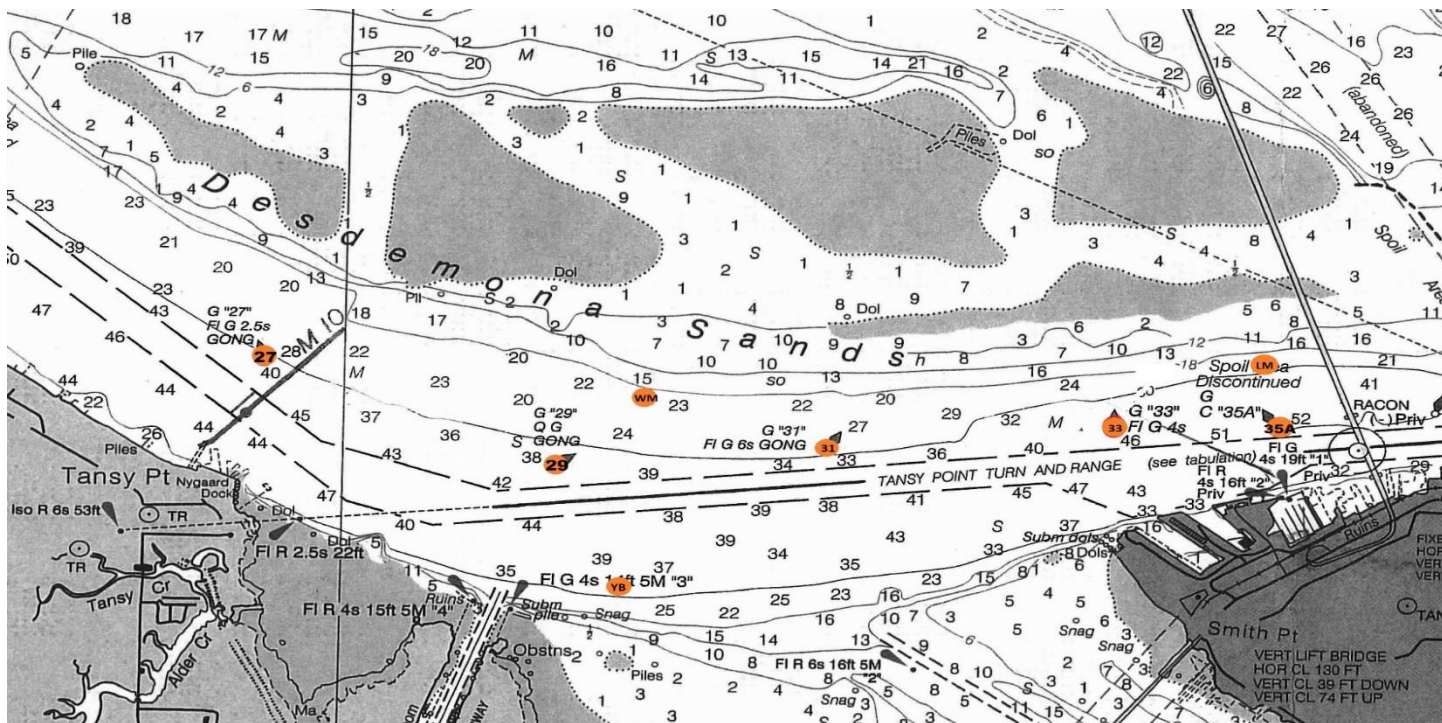
NOTE 2: For races that begin or end east of the Astoria-Megler Bridge, the race committee may start or finish races near the Columbia River Maritime Museum wharf to enhance the opportunity for community viewing of racing activities. Procedures for starting and finishing in that area will be announced at the competitor meetings prior to such races.

NOTE 3: Astoria Yacht Club plans to schedule various race skills training events during the racing season, including sessions for practicing safety and MOB recovery skills, night sailing, and sailing across the Columbia River bar. Dates, times and requirements for participation in such events will be posted on the Astoria Yacht Club web site.





## Astoria Racing Area – West of Megler Bridge



- 1)** S/F - 29 - 33 - 31 - S/F (4.5 NM)      **2)** S/F - 29 - S/F (3.0 NM)      **3)** S/F - 31 - 35A - S/F (2.4 NM)  
**4)** S/F - 27 - S/F (4.8 NM)\*      **5)** S/F - 27 - 35A - S/F (? NM)\*      **6)** S/F - WM - 33 - WM - S/F (4.6 NM)  
**7)** S/F - WM - 35A - S/F (3.1 NM)      **8)** S/F - YB - S/F (3 NM)      **9)** S/F - YB - S/F **X2** (6 NM)

S/F = Start-Finish Line

WM = Windward Mark set or designated by Race Committee

LM = Leeward Mark set or designated by Race Committee

YB = Yellow Buoy set by Race Committee

- Race Committee may replace 35A with LM during strong ebb tide

Numbers refer to navigation buoy numbers.

See NOAA "Columbia River" Chart #18521.

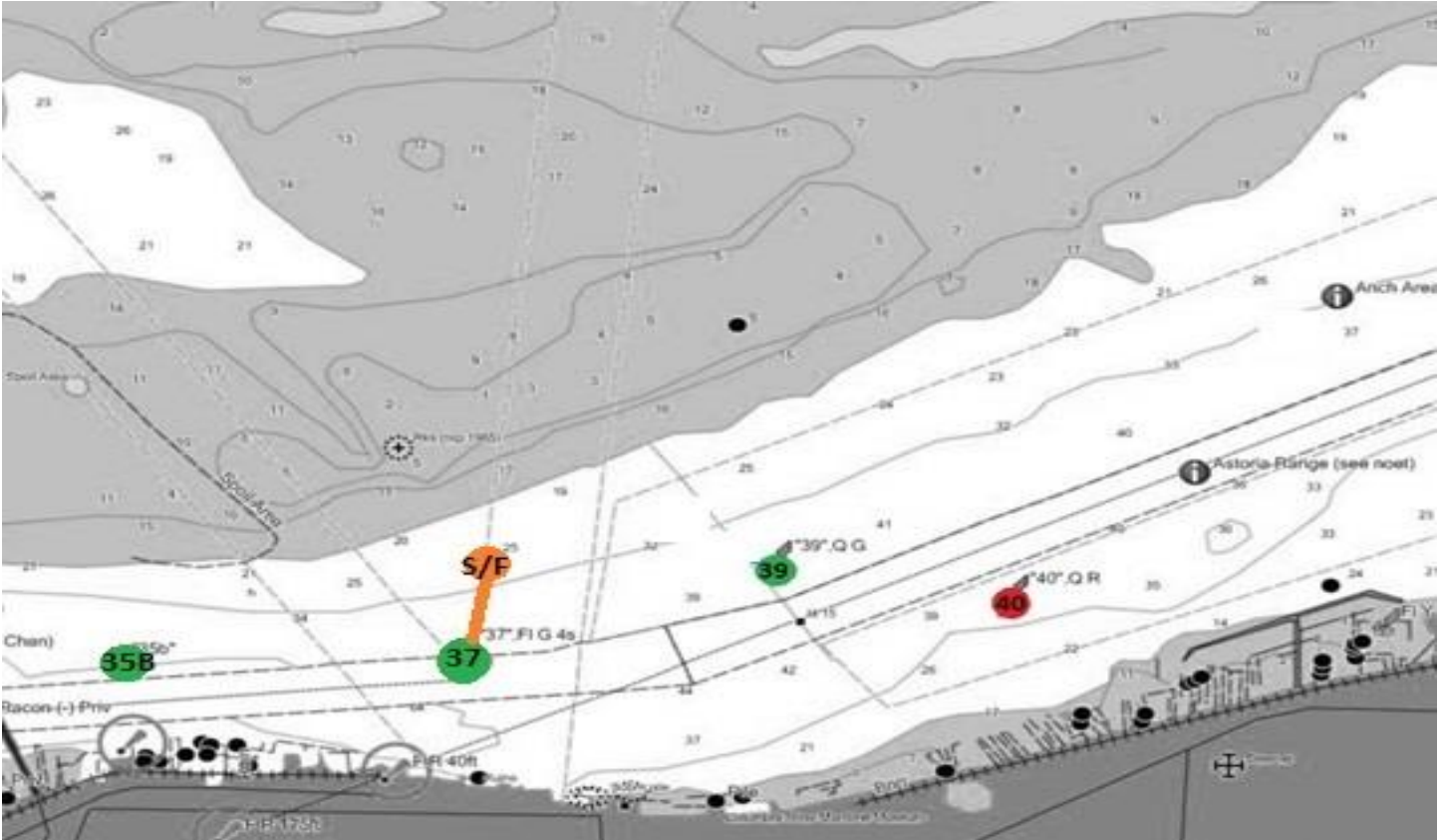
- \* Need to verify actual distance





# ATTACHMENT E

## Astoria Racing Area – East of Megler Bridge



- 1) S/F - 35B - 40 - S/F (2.8 NM)
- 2) S/F - 35B - 39 - 35B - S/F (3.1 NM)
- 3) S/F - 35B - 40 - 39 - S/F (2.9 NM)
- 4) S/F - 35B - 40 - 35B - 40 - S/F (5.5 NM)
- 5) S/F - 35B - 39 - 35B - 39 - S/F (4.2 NM)
- 6) S/F - 35B - 40 - 35B - S/F (? NM)\*
- 7) S/F - 35B - 39 - 35B - 39 - S/F (? NM)\*

S/F = Start-Finish Line

\* Need to verify actual distance

Numbers refer to navigation buoy numbers.  
See NOAA "Columbia River" Chart #18521.

# ATTACHMENT F



## Astoria Yacht Club Rabbit Start Instructions

The rabbit start is used to start a race to windward in the absence of a race signal boat. The “rabbit boat” starts the race by passing the designated starting mark on port tack. The other boats must pass behind the rabbit boat on starboard tack in order to start, as follows:

Before the starting time, the rabbit boat will reach back and forth above the starting mark and along the starting line area. All other boats must stay downwind of the starting mark and rabbit boat prior to the start.

The rabbit boat will provide **three sounds** during the starting sequence.

The **first sound** will be when the rabbit boat passes the starting mark on starboard tack to begin the starting sequence.

The **second sound** will be as the rabbit boat tacks (or gybes) to head back for the starting mark on port tack. This will be approximately one minute after the first sound.

The **third sound** will be as the rabbit boat passes the starting mark on port tack. This will be approximately one minute after the second sound.  
This is the starting signal.

The rabbit boat will remain approximately close hauled on port tack from the time of passing the starting mark for at least two minutes or until all boats have started, whichever occurs first.

The starting line is the line between the port-end starting mark and the rabbit boat, to the point where the rabbit boat tacks onto starboard. A boat starts when it crosses the starting line on starboard tack while the rabbit boat is on port tack after the third sound, or the line to where the rabbit boat tacked to starboard tack after the third sound. After starting, all boats shall remain on starboard tack for at least two minutes or until the rabbit boat has tacked to starboard, whichever occurs first.

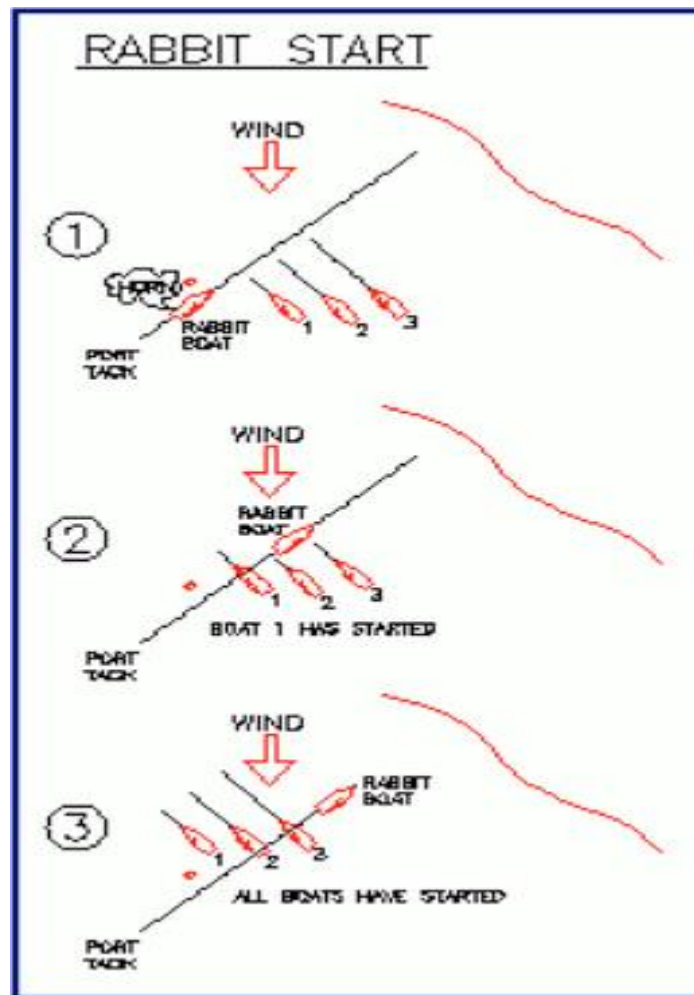
All times are approximate.

A boat making contact or interfering with the rabbit boat is automatically disqualified from the race and shall retire.

These instructions may be modified by mutual agreement of a majority of race participants.



# ATTACHMENT F (CONT.)



- Boats that find themselves to windward and unable to cross behind the rabbit boat on starboard tack after the starting signal will be considered “OCS” (on the course side of the starting line at the start). A late starting boat that has not crossed the starting line during the first two minutes following the starting signal shall be considered an OCS boat.
- OCS boats **must** round the starting mark end of the starting line (keeping the mark to port) in order to be counted as a starter. No dip starts are permitted.
- While maneuvering, OCS boats must keep clear of all boats that have properly started.
- Your elapsed time starts counting at the starting signal.
- The rabbit boat starts on port tack and the fleet starts on starboard tack. You cannot start by following the rabbit boat. If you do so, you will have no rights and will be considered OCS. You then must round the starting mark to start properly on starboard tack.